



## Instructions for Use

# TPO Ab ELISA

*Enzyme Immunoassay for the quantitative determination of Thyroid Peroxidase (TPO) autoantibodies in human serum or plasma*



**EIA-4114**



**96**



**DRG** 

DRG Instruments GmbH, Germany  
Frauenbergstr. 18, D-35039 Marburg  
Phone: +49 (0)6421-1700 0, Fax: +49-(0)6421-1700 50  
Internet: [www.drg-diagnostics.de](http://www.drg-diagnostics.de)  
E-Mail: [drg@drg-diagnostics.de](mailto:drg@drg-diagnostics.de)

**DRG** 

DRG International, Inc.  
USA  
Phone: (973) 564-755  
Fax: (973) 564-756  
E-Mail: [corp@drg-international.com](mailto:corp@drg-international.com)

**Please use only the valid version of the package insert provided with the kit.  
Verwenden Sie nur die jeweils gültige, im Testkit enthaltene, Arbeitsanleitung.  
Si prega di usare la versione valida dell'inserto del pacco a disposizione con il kit.  
Por favor, se usa solo la version valida de la metodico técnico incluido aqui en el kit.**

**Table of Contents / Inhaltsverzeichnis / Tabella die Contenuti / Tabla de Contenidos**

1	INTENDED USE .....	2
2	SUMMARY AND EXPLANATION OF THE TEST .....	2
3	PRINCIPLE .....	2
4	REAGENTS.....	3
5	PRECAUTIONS .....	4
6	SPECIMEN COLLECTION AND PREPARATION.....	4
7	QUALITY CONTROL .....	4
8	REAGENT PREPARATION .....	4
9	TEST PROCEDURE .....	5
10	CALCULATION OF RESULTS .....	5
11	Q.C. PARAMETERS .....	6
12	RISK ANALYSIS .....	6
13	EXPECTED RANGES OF VALUES .....	7
14	PERFORMANCE CHARACTERISTICS .....	7
15	REFERENCES / LITERATURE .....	8
1	VERWENDUNG.....	9
2	REAGENTS.....	9
3	PROBENVORBEREITUNG UND LAGERUNG .....	9
4	VORBEREITUNG DER REAGENZIEN .....	9
5	TEST PROCEDURE .....	10
6	ERWARTETE WERTE.....	10
7	ASSAY CHARACTERISTIKA .....	10
	USED SYMBOLS.....	11

## 1 INTENDED USE

The Quantitative Determination of Thyroid Peroxidase (TPO) Autoantibodies in Human Serum or Plasma by a Microplate Enzyme Immunoassay. Measurements of TPO autoantibodies may aid in the diagnosis of certain thyroid diseases such as Hashimoto's and Grave's as well as nontoxic goiter.

## 2 SUMMARY AND EXPLANATION OF THE TEST

Antibodies to thyroid peroxidase have been shown to be characteristically present from patients with Hashimoto thyroiditis (95%), idiopathic myxedema (90%) and Graves Disease (80%)<sup>1</sup>. In fact 72% of patients positive for anti-TPO exhibit some degree of thyroid dysfunction. This has led to the clinical measurement becoming a valuable tool in the diagnosis of thyroid dysfunction.

Measurements of antibodies to TPO have been done, in the past, by Passive Hemagglutination (PHA). PHA tests do not have the sensitivity of enzyme immunoassay and are limited by subjective interpretation. This procedure, with the enhanced sensitivity of EIA, permits the detectability of subclinical levels of antibodies to TPO. In addition, the results are quantitated by a spectrophotometer, which eliminates subjective interpretation.

The microplate enzyme immunoassay methodology provides the technician with optimum sensitivity while requiring few technical manipulations. In this method, serum reference, diluted patient specimen, or control is first added to a microplate well. Biotinylated Thyroid Peroxidase Antigen (TPO) is added, and then the reactants are mixed. Reaction results between the autoantibodies to TPO and the biotinylated TPO to form an immune complex, which is deposited to the surface of streptavidin coated wells through the high affinity reaction of biotin and streptavidin.

After the completion of the required incubation period, aspiration or decantation separates the reactants that are not attached to the wells. An enzyme anti-human IgG conjugate is then added to permit quantitation of reaction through interacting with human IgG of the immune complex. After washing, the enzyme activity is determined by reaction with substrate to produce color.

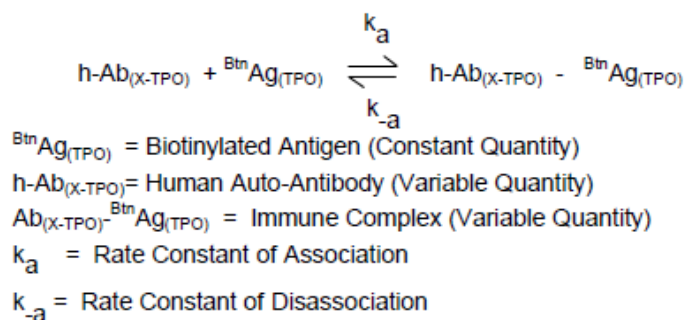
The employment of several serum references of known antibody activity permits construction of a graph of enzyme and antibody activities. From comparison to the dose response curve, an unknown specimen's enzyme activity can be correlated with autoimmune antibody level.

## 3 PRINCIPLE

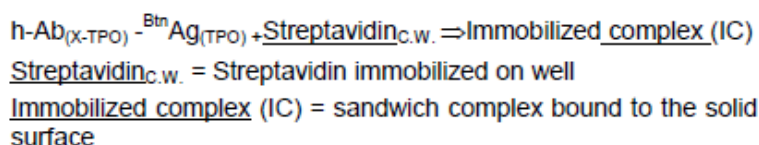
A Sequential ELISA Method (TYPE 1)

The reagents required for the sequential ELISA assay include immobilized antigen, circulating autoantibody and enzyme-linked species-specific antibody. In this procedure, the immobilization takes place during the assay at the surface of a microplate well through the interaction of streptavidin coated on the well and exogenous added biotinylated thyroid peroxidase antigen.

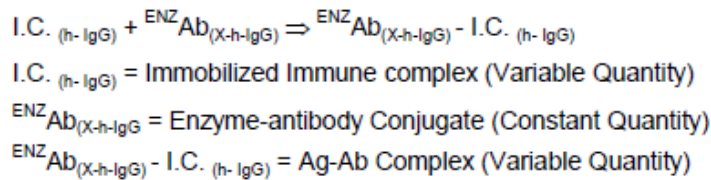
Upon mixing biotinylated antigen and a serum containing the autoantibody, a reaction results between the antigen and the antibody to form an immune-complex. The interaction is illustrated by the followed equation:



Simultaneously, the complex is deposited to the well through the high affinity reaction of streptavidin and biotinylated antigen. This interaction is illustrated below:



After the incubation time, the well is washed to separate the unbound components by aspiration and/or decantation. The enzyme linked species-specific antibody (anti-h-IgG) is then added to the microwells. This conjugates binds to the immune complex that formed.



The anti-h-IgG enzyme conjugate that binds to the immune complex in a second incubation is separated from unreacted material by a wash step. The enzyme activity in this fraction is directly proportional to the antibody concentration in the specimen. By utilizing several different serum references of known antibody activity, a reference curve can be generated from which the antibody activity of an unknown can be ascertained.

#### 4 REAGENTS

##### A. x-TPO Calibrators – 1.0 mL/vial, A-F

Six (6) vials of references for anti-TPO at levels of 0(A), 25(B), 50(C), 100(D), 250(E) and 500(F) IU/mL. Store at 2 °C - 8 °C. A preservative has been added.

**Note:** The calibrators, human serum based, were calibrated using a reference preparation, which was assayed against the Medical Research Council (MRC) International Standard 66/387 for anti thyroid microsome.

##### B. TPO Biotin Reagent – 13 mL/vial

One (1) vial of biotinylated thyroid peroxidase antigen stabilized in a buffering matrix. A preservative has been added. Store at 2 °C - 8 °C.

##### C. Anti-TPO Enzyme-antigen Reagent – 13 mL/vial

One (1) vial of anti-human IgG-horseradish peroxidase (HRP) conjugate stabilized in a buffering matrix. A preservative has been added. Store at 2 °C - 8 °C.

##### D. Streptavidin Coated Microplate – 96 wells

One 96-well microplate coated with streptavidin and packaged in an aluminum bag with a drying agent. Store at 2 °C - 8 °C.

##### E. Serum Diluent – 20 mL

One (1) vial of serum diluent containing buffer salts and yellow dye. Store at 2 °C - 8 °C.

##### F. Wash Solution Concentrate – 20 mL

One (1) vial containing a surfactant in buffered saline. A preservative has been added. Store at 2 °C - 8 °C.

##### G. Substrate A – 7 mL/vial

One (1) bottle containing tetramethylbenzidine (TMB) in buffer. Store at 2 °C - 8 °C.

##### H. Substrate B – 7 mL/vial

One (1) bottle containing hydrogen peroxide (H<sub>2</sub>O<sub>2</sub>) in buffer. Store at 2 °C - 8 °C.

##### I. Stop Solution – 8 mL/vial

One (1) bottle containing a strong acid (1N HCl). Store at 2 °C - 8 °C.

##### J. Product Instructions

**Note 1:** Do not use reagents beyond the kit expiration date.

**Note 2:** Opened reagents are stable for sixty (60) days when stored at 2 °C - 8 °C. Kit and component stability are identified on the label.

**Note 3:** Above reagents are for a single 96-well microplate.

#### 4.1 REQUIRED BUT NOT PROVIDED

1. Pipette capable of delivering 10, 25 and 50 µL volumes with a precision of better than 1.5%.
2. Dispenser(s) for repetitive deliveries of 0.100 mL and 0.350 mL volumes with a precision of better than 1.5%.
3. Microplate washers or a squeeze bottle (optional).
4. Microplate Reader with 450 nm and 620 nm wavelength absorbance capability.
5. Absorbent Paper for blotting the microplate wells.
6. Plastic wrap or microplate cover for incubation steps.
7. Vacuum aspirator (optional) for wash steps.
8. Test tubes for patient dilution.
9. Timer.
10. Quality control materials.

## 5 PRECAUTIONS

### *For In Vitro Use.*

#### **Not for Internal or External Use in Humans or Animals.**

All products that contain human serum have been found to be non-reactive for Hepatitis B Surface Antigen, HIV 1&2 and HCV Antibodies by FDA licensed reagents. Since no known test can offer complete assurance that infectious agents are absent, all human serum products should be handled as potentially hazardous and capable of transmitting disease. Good laboratory procedures for handling blood products can be found in the Center for Disease Control / National Institute of Health, "Biosafety in Microbiological and Biomedical Laboratories," 2nd Edition, 1988, HHS Publication No. (CDC) 88-8395.

Safe Disposal of kit components must be according to local regulatory and statutory requirements.

## 6 SPECIMEN COLLECTION AND PREPARATION

The specimens shall be blood; serum or plasma in type and the usual precautions in the collection of venipuncture samples should be observed.

For accurate comparison to established normal values, a fasting morning serum sample should be obtained. The blood should be collected in a plain redtop venipuncture tube without additives or anti-coagulants (for serum) or evacuated tube(s) containing EDTA or heparin. Allow the blood to clot for serum samples. Centrifuge the specimen to separate the serum or plasma from the cells.

Samples may be refrigerated at 2 °C - 8 °C for a maximum period of five (5) days.

If the specimen(s) cannot be assayed within this time, the sample(s) may be stored at temperatures of -20 °C for up to 30 days. Avoid repetitive freezing and thawing.

When assayed in duplicate, 0.05 mL of the specimen is required.

## 7 QUALITY CONTROL

Each laboratory should assay controls at levels in the normal, borderline and elevated range for monitoring assay performance. These controls should be treated as unknowns and values determined in every test procedure performed. Quality control charts should be maintained to follow the performance of the supplied reagents. Pertinent statistical methods should be employed to ascertain trends.

The individual laboratory should set acceptable assay performance limits. In addition maximum absorbance should be consistent with past experience.

Significant deviation from established performance can indicate unnoticed change in experimental conditions or degradation of kit reagents. Fresh reagents should be used to determine the reason for the variations.

## 8 REAGENT PREPARATION

### 1. Serum Diluent

Dilute the serum diluent to 200 mL in a suitable container with distilled or deionized water.  
Store at 2 °C - 8 °C.

### 2. Wash Buffer

Dilute contents of wash concentrate to 1000 mL with distilled or deionized water in a suitable storage container.  
Store at 2 °C - 30 °C room temperature 20-27°C for up to 60 days.

### 3. Working Substrate Solution

Pour the contents of the amber vial labeled Solution 'A' into the clear vial labeled Solution 'B'. Place the yellow cap on the clear vial for easy identification.  
Mix and label accordingly, store at 2 °C - 8 °C.

**Note: Do not use the working substrate if it looks blue.**

### 4. Patient Sample Dilution (1/100)

Dispense 0.010 mL (10 µL) of each patient specimen into 1 mL of serum diluent. Cover and vortex or mix thoroughly by inversion.  
Store at 2 °C - 8 °C for up to forty-eight (48) hours.

**Note:** Do not use reagents that are contaminated or have bacteria growth.

## 9 TEST PROCEDURE

**Before proceeding with the assay, bring all reagents, serum references and controls to room temperature (20 °C - 27 °C). \*\*Test Procedure should be performed by a skilled individual or trained professional.\*\***

1. Format the microplates' wells for each serum reference, control and patient specimen to be assayed in duplicate. *Replace any unused microwell strips back into the aluminum bag, seal and store at 2 °C - 8 °C.*
2. Pipette 0.025 mL (25 µL) of the appropriate serum reference, control or diluted patient specimen into the assigned well.
3. Add 0.100 mL (100 µL) of TPO Biotin Reagent.
4. Swirl the microplate gently for 20-30 seconds to mix and cover.
5. Incubate 60 minutes at room temperature.
6. Discard the contents of the microplate by decantation or aspiration. If decanting, blot the plate dry with absorbent paper.
7. Add 350 µL of wash buffer (see Reagent Preparation Section), decant (blot and tap) or aspirate. Repeat two (2) additional times for a total of three (3) washes. *An automatic or manual plate washer can be used. Follow the manufacturer's instruction for proper usage. If a squeeze bottle is employed, fill each well by depressing the container (avoiding air bubbles) to dispense the wash. Decant the wash and repeat two (2) additional times.*
8. Add 0.100 mL (100 µL) of the x-TPO Enzyme Reagent to all wells. *Always add reagents in the same order to minimize reaction time differences between wells. DO NOT SHAKE THE PLATE AFTER ENZYME ADDITION.*
9. Incubate for thirty (30) minutes at room temperature.
10. Repeat steps (6 & 7) as explained above.
11. Add 0.100 mL (100 µL) of Working Substrate Solution to all wells (see Reagent Preparation Section). *Always add reagents in the same order to minimize reaction time differences between wells. DO NOT SHAKE THE PLATE AFTER SUBSTRATE ADDITION.*
12. Incubate at room temperature for fifteen (15) minutes.
13. Add 0.050 mL (50 µL) of stop solution to each well and mix gently for 15-20 seconds. *Always add reagents in the same order to minimize reaction time differences between wells.*
14. Read the absorbance in each well at 450 nm (using a reference wavelength of 620-630 nm to minimize well imperfections) in a microplate reader.  
**The results should be read within thirty (30) minutes of adding the stop solution.**

**Note:** For re-assaying specimens with concentrations greater than 500 IU/mL, dilute the sample an additional 1:5 or 1:10 using the original diluted material. Multiply by the dilution factor to obtain the concentration of the specimen.

## 10 CALCULATION OF RESULTS

A reference curve is used to ascertain the concentration of anti-TPO in unknown specimens.

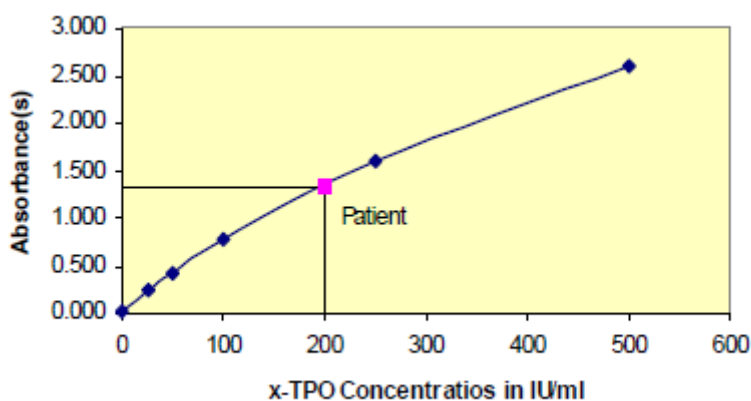
1. Record the absorbance obtained from the printout of the microplate reader as outlined in Example 1.
2. Plot the absorbance for each duplicate serum reference versus the corresponding anti-TPO activity in IU/mL on linear graph paper.
3. Draw the best-fit curve through the plotted points.
4. To determine the level of anti-TPO activity for an unknown, locate the average absorbance of the duplicates for each unknown on the vertical axis of the graph, find the intersecting point on the curve, and read the concentration (in IU/mL) from the horizontal axis of the graph (the duplicates of the unknown may be averaged as indicated). In the following example, the average absorbance (1.3239 intersects the dose response curve at 200 IU/mL anti-TPO concentration (See Figure 1). \*

**Note:** Computer Data reduction software designed for ELISA assays may also be used for the data reduction. If such software is utilized, the validation of the software should be ascertained.

**EXAMPLE I**

Sample I.D.	Well Number	Abs (A)	Mean Abs (B)	Value (IU/mL)
Cal A	A1	0.022	0.026	0
	B1	0.030		
Cal B	C1	0.240	0.244	25
	D1	0.247		
Cal C	E1	0.437	0.430	50
	F1	0.422		
Cal D	G1	0.795	0.788	100
	H1	0.782		
Cal E	A2	1.610	1.590	250
	B2	1.572		
Cal F	C2	2.659	2.600	500
	D2	2.533		
Patient	E2	1.294	1.323	<b>200</b>
	F2	1.351		

\*The data presented in Example 1 and Figure 1 is for illustration only and **should not** be used in lieu of a standard curve prepared with each assay.

**FIGURE 1****11 Q.C. PARAMETERS**

In order for the assay results to be considered valid the following criteria should be met:

1. The absorbance (OD) of calibrator F should be  $\geq 1.3$ .
2. Four out of six quality control pools should be within the established ranges.

**12 RISK ANALYSIS****12.1 Assay Performance**

1. It is important that the time of reaction in each well is held constant for reproducible results.
2. Pipetting of samples should not extend beyond ten (10) minutes to avoid assay drift.
3. Highly lipemic, hemolyzed or grossly contaminated specimen(s) should not be used.
4. If more than one (1) plate is used, it is recommended to repeat the dose response curve.
5. The addition of the substrate solution initiates a kinetic reaction, which is terminated by the addition of the stop solution. Therefore, the addition of the substrate and the stopping solution should be added in the same sequence to eliminate any time deviation during reaction.
6. Plate readers measure vertically. Do not touch the bottom of the wells.
7. Failure to remove adhering solution adequately in the aspiration or decantation wash step(s) may result in poor replication and spurious results.
8. Use components from the same lot. No intermixing of reagents from different batches.
9. Very high concentration of anti-TPO in patient specimens can contaminate samples immediately following these extreme levels. Bad duplicates are indicative of cross contamination. Repeat any sample, which follows any patient specimen with over 3.0 units of absorbance.

10. Accurate and precise pipetting, as well as following the exact time and temperature requirements prescribed are essential. Any deviation from these instructions may yield inaccurate results.
11. All applicable national standards, regulations and laws, including, but not limited to, good laboratory procedures, must be strictly followed to ensure compliance and proper device usage.
12. It is important to calibrate all the equipment e.g. Pipettes, Readers, Washers and/or the automated instruments used with this device, and to perform routine preventative maintenance.
13. Risk Analysis - as required by CE Mark IVD Directive 98/79/EC for this and other devices, made by DRG, can be requested via email from DRG at drg@drg-diagnostics.de.

## 12.2 Interpretation

1. Measurements and interpretation of results must be performed by a skilled individual or trained professional.
2. Laboratory results alone are only one aspect for determining patient care and should not be the sole basis for therapy, particularly if the results conflict with other determinants.
3. For valid test results, adequate controls and other parameters must be within the listed ranges and assay requirements.
4. If test kits are altered, such as by mixing parts of different kits, which could produce false test results, or if results are incorrectly interpreted. DRG shall have no liability.
5. If computer controlled data reduction is used to interpret the results of the test, it is imperative that the predicted values for the calibrators fall within 10% of the assigned concentrations.
6. The presence of autoantibodies to TPO is confirmed when the serum level exceeds 40 IU/mL. The clinical significance of the result, coupled with anti-thyroglobulin activity, should be used in evaluating the thyroid condition. However, clinical inferences should not be solely based on this test but rather as an adjunct to the clinical manifestations of the patient and other relevant tests.

## 13 EXPECTED RANGES OF VALUES

A study of normal population was undertaken to determine expected values for the Anti-TPO ELISA Test System. The number (n), mean (x) and standard deviation ( $\sigma$ ) are given in Table 1.

Values in excess of 40 IU/mL are considered positive for the presence of anti-TPO autoantibodies.

**TABLE 1**  
**Expected Values for the Anti-TPO ELISA Test System (in IU/mL)**

Number	100
Mean	17.6
Standard Deviation	10.8
Upper 95% (+2 $\sigma$ ) level	39.2

It is important to keep in mind that establishment of a range of values which can be expected to be found by a given method for a population of "normal"-persons is dependent upon a multiplicity of factors: the specificity of the method, the population tested and the precision of the method in the hands of the analyst. For these reasons each laboratory should depend upon the range of expected values established by the Manufacturer only until an in-house range can be determined by the analysts using the method with a population indigenous to the area in which the laboratory is located.

## 14 PERFORMANCE CHARACTERISTICS

### 14.1 Precision

The within and between assay precisions of the TPO Ab ELISA Test System were determined by analyses on three different levels of pool control sera. The number (N), mean (X), standard deviation ( $\sigma$ ) and coefficient of variation (C.V.) for each of these control sera are presented in Table 2 and Table 3.

**TABLE 2**  
**Within Assay Precision (Values in %U)**

Sample	N	X	$\sigma$	C.V.
Pool 1	20	25.5	1.5	5.7 %
Pool 2	20	120.5	4.6	3.8 %
Pool 3	20	352.4	14.8	4.2 %



**TABLE 3\***  
**Between Assay Precision (Values in %U)**

Sample	N	X	$\sigma$	C.V.
Pool 1	10	26.5	1.8	6.8 %
Pool 2	10	118.5	5.3	4.5 %
Pool 3	10	365.4	22.5	6.2 %

\*As measured in ten experiments in duplicate over a ten day period.

#### 14.2 Sensitivity

The TPO Ab ELISA has a sensitivity of 0.92 IU/mL.

The sensitivity (detection limit) was ascertained by determining the variability of the '0 IU/mL' calibrator and using the  $2\sigma$  (95% certainty) statistic to calculate the minimum dose.

#### 14.3 Accuracy

The TPO Ab ELISA was compared with a reference microplate anti-TPO ELISA. Biological specimens from normal and disease states populations were used. The disease states included; Hashimoto's thyroiditis, Graves Disease, thyroid nodules as well as thyroid carcinoma. The total number of such specimens was 82. The least square regression equation and the correlation coefficient were computed for the anti-TPO ELISA method in comparison with the reference method. The data obtained is displayed in Table 4.

**TABLE 4**

Method	Mean (x)	Least Square Regression Analysis	Correlation Coefficient
This Method	122.9	Y = 1.02 (x) - 5.1	0.989
Reference	127.0		

#### 14.4 Specificity

Interferences from ANA, DNA, thyroglobulin (Tg) and rheumatoid antibodies were found to be insignificant.

### 15 REFERENCES / LITERATURE

1. Volpé R., Autoimmune disease of the endocrine system, Boca Raton FL, : CRC Press, 1990.
2. Volpé, R., Clin. Chem., 40, 2132 (1994).
3. Beever K., et. al., Clin. Chem.,35, 1949-54 (1989).
4. Mak T., Clin. Chem., 40, 2128 (1994).
5. Czarnocka B, Ruff J, Ferrand M, Carayon P, Lissitzky S. 'Purification of the human thyroid and its identification as the microsomal antigen involved in the human thyroid disease.' FEBS. Letts 1985; 190:147-52.
6. Portman L, hamada N, Heinrich G, Degroot LJ. 'Anti-Thyroid Peroxidase antibody in patients with autoimmune thyroid disease; Possible identity with anti-microsomal antibody.' J of Clin. Endocrinology & Metabolism. 1985;61:1001-3.
7. Chiavato L, Pinchera A.'The microsomal-peroxidase antigen:modulation of its expression in thyroid cells.' Autoimmunity 1991;10:319-31.
8. Nunez J. Pommier J, 'Formation of thyroid hormones.' Vitam Horm 1982;39:175-229.
9. Ekholm R.'Biosynthesis of thyroid hormones.' Int.Rev. Cytol 1990:120:243-288.
10. Degroot LJ, 'Heterogeneity of human antibodies to TPO. Thyroperoxidase.' Thyroid Autoimmunity. 1990; 207:177-182.

## 1 VERWENDUNG

Der TPO Ab ELISA wird zur quantitativen Bestimmung von Autoantikörpern gegen Thyroid-Peroxidase (TPO) in humanem Serum und Plasma eingesetzt.

## 2 REAGENTS

### A. x-TPO Calibrator – 1.0 mL/Fläschchen, A-F

Sechs (6) Fläschchen Kalibratorlösung mit anti-TPO-Konzentrationen von 0(A), 25(B), 50(C), 100(D), 250(E) und 500(F) IU/mL. Lagerung bei 2 °C - 8 °C. Enthält Konservierungsmittel.

**Hinweis:** Die auf Humanserum basierenden Kalibratoren wurden unter Verwendung einer Referenzpreparation kalibriert, die gegen den Medical Research Council (MRC) International Standard 66/387 für anti-Thyroid-Microsomen getestet wurde.

### B. TPO Biotin Reagent – 13 mL/ Fläschchen

Ein (1) Fläschchen mit biotinyliertem Thyroidperoxidase-Antigen. Enthält Konservierungsmittel. Lagerung bei 2 °C - 8 °C.

### C. Anti-TPO Enzyme-antigen Reagent – 13 mL/ Fläschchen

Ein (1) Fläschchen mit anti-human IgG-HRP konjugiert. Enthält Konservierungsmittel. Lagerung bei 2 °C - 8 °C.

### D. Streptavidin Coated Microplate – 96 Wells

Eine 96-well Mikrotiterplatte beschichtet mit Streptavidin. Lagerung bei 2 °C - 8 °C.

### E. Serum Diluent – 20 mL

Ein (1) Fläschchen mit Serumverdünnungsmedium, enthält Puffersalze und eine gelbe Farbe. Lagerung bei 2 °C - 8 °C.

### F. Wash Solution Concentrate – 20 mL

Ein (1) Fläschchen, enthält ein Tensid in gepufferter Salzlösung. Enthält Konservierungsmittel. Lagerung bei 2 °C - 8 °C.

### G. Substrate A – 7 mL/ Fläschchen

Ein (1) Fläschchen, enthält Tetramethylbenzidin (TMB) in Puffer. Lagerung bei 2 °C - 8 °C.

### H. Substrate B – 7 mL/ Fläschchen

Ein (1) Fläschchen, enthält Hydrogenperoxid (H<sub>2</sub>O<sub>2</sub>) in Puffer. Lagerung bei 2 °C - 8 °C.

### I. Stop Solution – 8 mL/ Fläschchen

Ein (1) Fläschchen, enthält Säure (1N HCl). Lagerung bei 2 °C - 8 °C.

### J. Gebrauchsanweisung

**Hinweis 1:** Reagenzien nicht nach dem auf dem Kit-Etikett angegebenen Verfallsdatum verwenden.

**Hinweis 2:** Geöffnete Reagenzien sind 60 Tage stabil, wenn sie bei 2 °C - 8 °C gelagert werden.

**Hinweis 3:** Die obigen Reagenzien reichen für eine 96-well Mikrotiterplatte.

## 3 PROBENVORBEREITUNG UND LAGERUNG

Serum oder Plasma (EDTA-, oder Heparinplasma) kann in diesem Test als Probenmaterial eingesetzt werden.

Die Probe sollte morgens bei nüchternen Patienten entnommen werden.

Die Proben können bei 2 °C - 8 °C maximal fünf (5) Tage gelagert werden.

Für eine längere Aufbewahrung (bis zu 30 Tage) sollten die Proben eingefroren bei -20 °C bis zum Testbeginn gelagert werden. Nur einmal einfrieren.

## 4 VORBEREITUNG DER REAGENZIEN

### 1. Serum Diluent

Serum Diluent mit destilliertem oder deionisiertem Wasser in einem geeigneten Gefäß bis auf ein Volumen von 200 mL verdünnen. Lagerung bei 2 °C - 8 °C.

### 2. Wash Buffer

Das Waschpuffer-Konzentrat mit destilliertem oder deionisiertem Wasser in einem geeigneten Gefäß bis auf ein Volumen von 1000 mL verdünnen. Lagerung bei 2 °C - 30 °C) für bis zu 60 Tagen.

### 3. Substrat-Arbeitslösung

Den Inhalt des bräunlichen Fläschchens (Solution A) in das klare Fläschchen (Solution B) umfüllen. Zur einfachen Identifizierung die gelbe Verschlusskappe auf das klare Fläschchen schrauben.

Gut mischen und entsprechend beschriften. Lagerung bei 2 °C - 8 °C.

**Hinweis: Die Substrat-Arbeitslösung nicht verwenden, wenn die blau erscheint.**

**4. Verdünnung der Patientenproben (1/100)**

Jeweils 10 µL Probe in 1 mL Serum Diluent pipettieren. Verschließen und gut mischen.  
Lagerung bei 2 °C - 8 °C für 48 Stunden.

**5 TEST PROCEDURE**

*Vor Beginn des Testes alle Reagenzien, Kalibratoren und Kontrollen auf Raumtemperatur (20 °C - 27 °C) bringen.*

1. Die benötigte Anzahl Wells in der Halterung befestigen.
2. Je **25 µL** Kalibratoren, Kontrollen und verdünnte Patientenproben mit neuen Plastikspitzen in die entsprechenden Wells geben.
3. **100 µL** TPO Biotin Reagent in jedes Well geben.
4. Für 20-30 Sekunden vorsichtig mischen und abdecken.
5. 60 Minuten bei Raumtemperatur inkubieren.
6. Den Inhalt der Wells kräftig ausschütteln. Verbleibende Flüssigkeit durch Ausklopfen der Wells auf saugfähigem Papier entfernen
7. **350 µL** Waschpuffer hinzufügen (s. VORBEREITUNG DER REAGENZIEN), dekantieren oder absaugen. Den Vorgang zweimal wiederholen, für eine Gesamtzahl von 3 Waschdurchläufen.
8. **100 µL** x-TPO Enzyme Reagent in jedes Well geben.  
*Reagenzien immer in der gleichen Reihenfolge pipettieren, um Zeitverschiebungen zu vermeiden.*  
**NACH HINZUFÜGEN DES ENZYMS NICHT SCHÜTTELN.**
9. 30 Minuten bei Raumtemperatur inkubieren.
10. Schritt 6 & 7 wiederholen.
11. **100 µL** Substrat-Arbeitslösung in jedes Well geben (s. VORBEREITUNG DER REAGENZIEN).  
*Reagenzien immer in der gleichen Reihenfolge pipettieren, um Zeitverschiebungen zu vermeiden.*  
**NACH HINZUFÜGEN DES SUBSTRATES NICHT SCHÜTTELN..**
12. 15 Minuten bei Raumtemperatur inkubieren.
13. **50 µL** Stop Solution in jedes Well geben und 15-20 Sekunden vorsichtig mischen.  
*Reagenzien immer in der gleichen Reihenfolge pipettieren, um Zeitverschiebungen zu vermeiden.*
14. Die Optische Dichte bei  $450 \pm 10$  nm (Referenzwellenlänge 620-630 nm) mit einem Mikrotiterplatten-Lesegerät **innerhalb von 30 Minuten** nach Zugabe der Stop Solution bestimmen.

**Hinweis:**

Proben, mit einer Konzentration höher als 500 IU/mL, müssen verdünnt werden. Dafür wird die bereits vorverdünnte Probe 1:5 oder 1:10 weiter verdünnt.

Dieser Verdünnungsfaktor muss bei der Berechnung der Konzentration beachtet werden.

**6 ERWARTETE WERTE**

Es wird empfohlen, dass jedes Labor seine eigenen normalen und abnormalen Werte ermittelt.

**TABELLE 1****Erwartete Werte für den Anti-TPO ELISA (in IU/mL)**

Anzahl	100
Mittelwert	17,6
Standardabweichung	10,8
95% (+2σ) Bereich	39,2

**7 ASSAY CHARACTERISTIKA****7.1 Sensitivität**

Die Sensitivität des TPO Ab ELISAs beträgt 0,92 IU/mL.

**7.2 Spezifität**

Interferenzen mit ANA, DNA, Thyroglobulin (Tg) und rheumatoiden Antikörpern sind nicht signifikant.

## USED SYMBOLS

Symbol	English	Deutsch	Français	Español	Italiano
	Consult instructions for use	Gebrauchsanweisung beachten	Consulter les instructions d'utilisation	Consulte las instrucciones de uso	Consultare le istruzioni per l'uso
	European Conformity	CE-Konformitätskennzeichnung	Conformité aux normes européennes	Conformidad europea	Conformità europea
	In vitro diagnostic device	In-vitro-Diagnostikum	Usage Diagnostic in vitro	Para uso Diagnóstico in vitro	Per uso Diagnostica in vitro
	For research use only	Nur für Forschungszwecke	Seulement dans le cadre de recherches	Sólo para uso en investigación	Solo a scopo di ricerca
	Catalogue number	Katalog-Nr.	Numéro de catalogue	Número de catálogo	Numero di Catalogo
	Lot. No. / Batch code	Chargen-Nr.	Numéro de lot	Número de lote	Numero di lotto
	Contains sufficient for <n> tests/	Ausreichend für "n" Ansätze	Contenu suffisant pour "n" tests	Contenido suficiente para <n> ensayos	Contenuto sufficiente per "n" saggi
	Storage Temperature	Lagerungstemperatur	Température de conservation	Temperatura de conservación	Temperatura di conservazione
	Expiration Date	Mindesthaltbarkeitsdatum	Date limite d'utilisation	Fecha de caducidad	Data di scadenza
	Manufacturer	Hersteller	Fabricant	Fabricante	Fabbricante
Distributed by	Distributor	Vertreiber	Distributeur	Distribuidor	Distributore
Content	Content	Inhalt	Conditionnement	Contenido	Contenuto
Volume/No.	Volume / No.	Volumen/Anzahl	Volume/Quantité	Volumen/Número	Volume/Quantità